

Installation manual

Level detection system Storage tank/Storage room

CMP06 – TO_VA6.39

FA 2.00

ENGLISH





Title: Installation manual
Article number: S 160_EN 2.2

Version valid from: 09/2013
Approved: Wohlinger Christian

Author

ÖkoFEN Forschungs- &
EntwicklungsgesmbH
A-4133 Niederkappel, Gewerbepark 1
Tel.: +43 (0) 72 86 / 74 50
Fax.: +43 (0) 72 86 / 74 50 - 10
E-Mail: oekofen@pelletsheizung.at
www.oekofen.com

© by ÖkoFEN Forschungs- und EntwicklungsgesmbH
Subject to modifications

1 Dear Customer 4

2 Types of safety warning sign..... 5

3 Product Description 6

3.1 Operating Conditions..... 6

3.2 Level Monitoring System components 6

4 Installation of the Level Monitoring System.....7

4.1 Installation of the Level Monitoring System for a Storage Tank7

4.2 Installation of the Level Monitoring System for a Storage Room..... 8

5 Setting Up the Level Monitoring System 9

5.1 Electrical Connection of the Capacitive Sensor..... 9

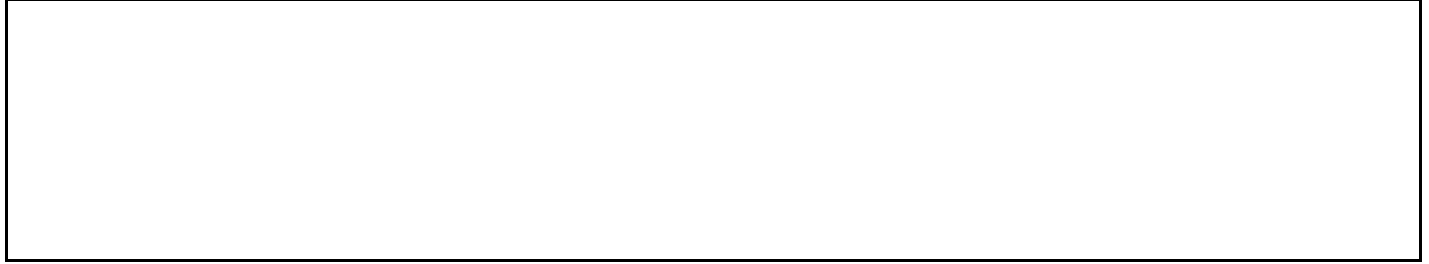
5.2 Settings on the boiler controller..... 11

1 Dear Customer

ÖkoFEN is Europe's leading specialist in pellet heating.

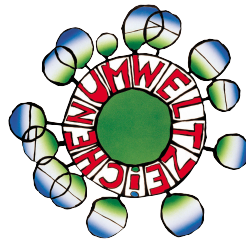
Proficiency, innovation and quality combined. This is the tradition on which ÖkoFEN shapes the future. We are very pleased that you too have decided to purchase a product from ÖkoFEN.

- This instruction manual is intended to help you operate the product safely, properly and economically.
- Please read this instruction manual right through and take note of the safety warnings.
- Keep all documentation supplied with this unit in a safe place for future reference.
Please pass on the documentation to the new user if you decide to part with the unit at a later date.
- Please contact your authorised dealer if you have any questions.



ÖkoFEN attaches great importance to the development of new products. Our R&D Department repeatedly challenges the effectiveness of tried-and-tested systems and works continuously on improvements. In this way, we secure our technological advantage. We have already received many national and international awards for our products.

All our products comply with European standards in respect of quality, efficiency and emissions.

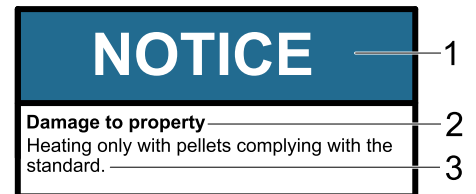


2 Types of safety warning sign

The warning signs use the following symbols and text.

Types of safety warning sign

1. Risk of injury
2. Consequences of risk
3. Avoiding risk



1. Risk of injury:

Danger - indicates a situation that could lead to death or life-threatening injury.



Warning - indicates a situation that could lead life-threatening or serious injury.



Caution - indicates a situation that could lead to injury.



Note - indicates a situation that could lead to property damage.



2. Consequences of risk

Effects and consequences resulting from incorrect operation.

3. Avoiding risk

Observing safety instructions ensures that the heating system is operated safely

3 Product Description

The capacitive sensor measures the presence of pellets at a selected level in the storage tank or storage room.

You can set the projection of the sensor into the fuel store by adjusting the telescopic tube and the height by cutting the braided hose. If the capacitive sensor is not surrounded by pellets in the storage tank or storage room, a warning message appears on the display of the operating device. The closer the capacitive sensor is to the fuel transport auger, the smaller the remaining quantity of pellets when a warning message is issued.

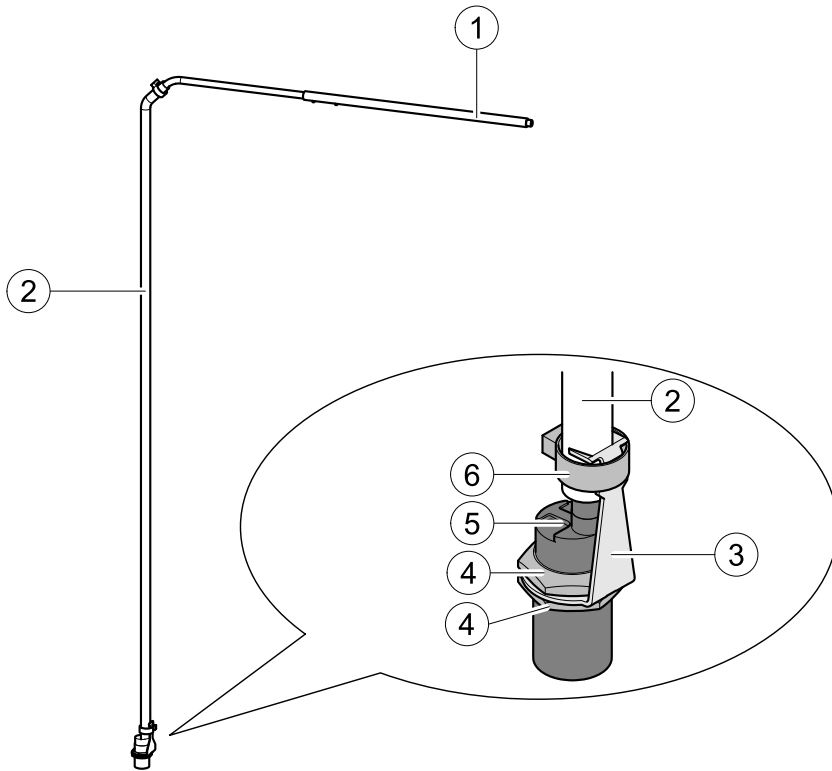
Note:

Position the capacitive sensor in the front third of the storage room, as it is emptied from back to front. It is recommended that the capacitive sensor is positioned at a height of 0.5 - 1 m / 20 - 40 inch above the transport auger.

3.1 Operating Conditions

Level monitoring with a capacitive sensor is possible with boiler controller CMP 1.4 Version 2.36 and boiler controller CMP 0.6 Version 6.36.

3.2 Level Monitoring System components



1	Telescopic tube
2	Plastic hose
3	Brace plate
4	Nut
5	Capacitive sensor
6	Hose clamp

4 Installation of the Level Monitoring System

Description of the process for installing the level monitoring system with a storage tank and in a storage room.

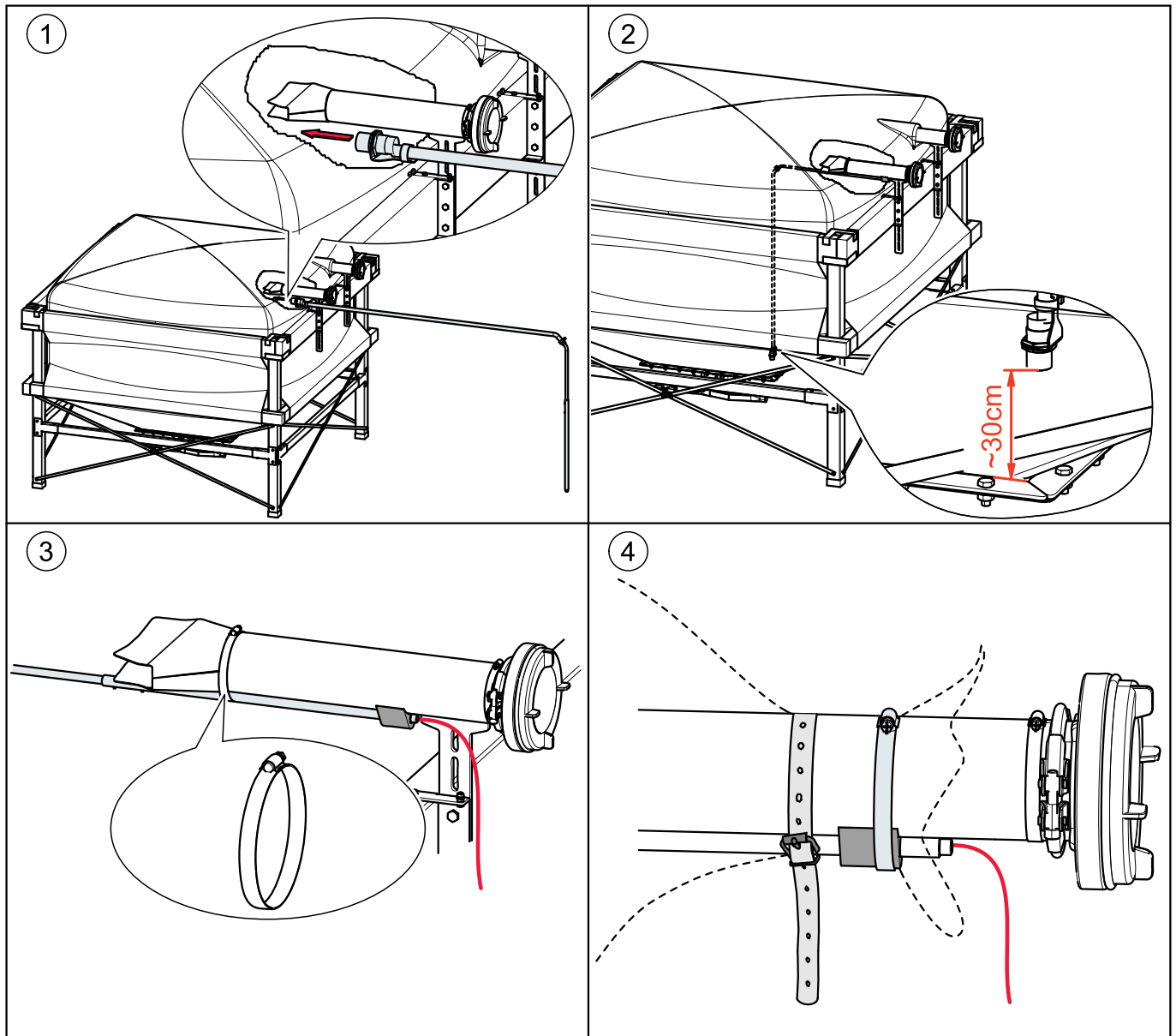
4.1 Installation of the Level Monitoring System for a Storage Tank

Installation of the level monitoring system takes place during assembly of the storage tank after mounting the injection nozzle on the storage tank and before fixing the storage tank opening to the filler pipe.

For assembly of the storage tank, please refer to the **Storage Tank Installation Manual**.

Note:

Retrofitting of the level monitoring system is only possible when the storage tank has been completely emptied.



4.2 Installation of the Level Monitoring System for a Storage Room

Note:

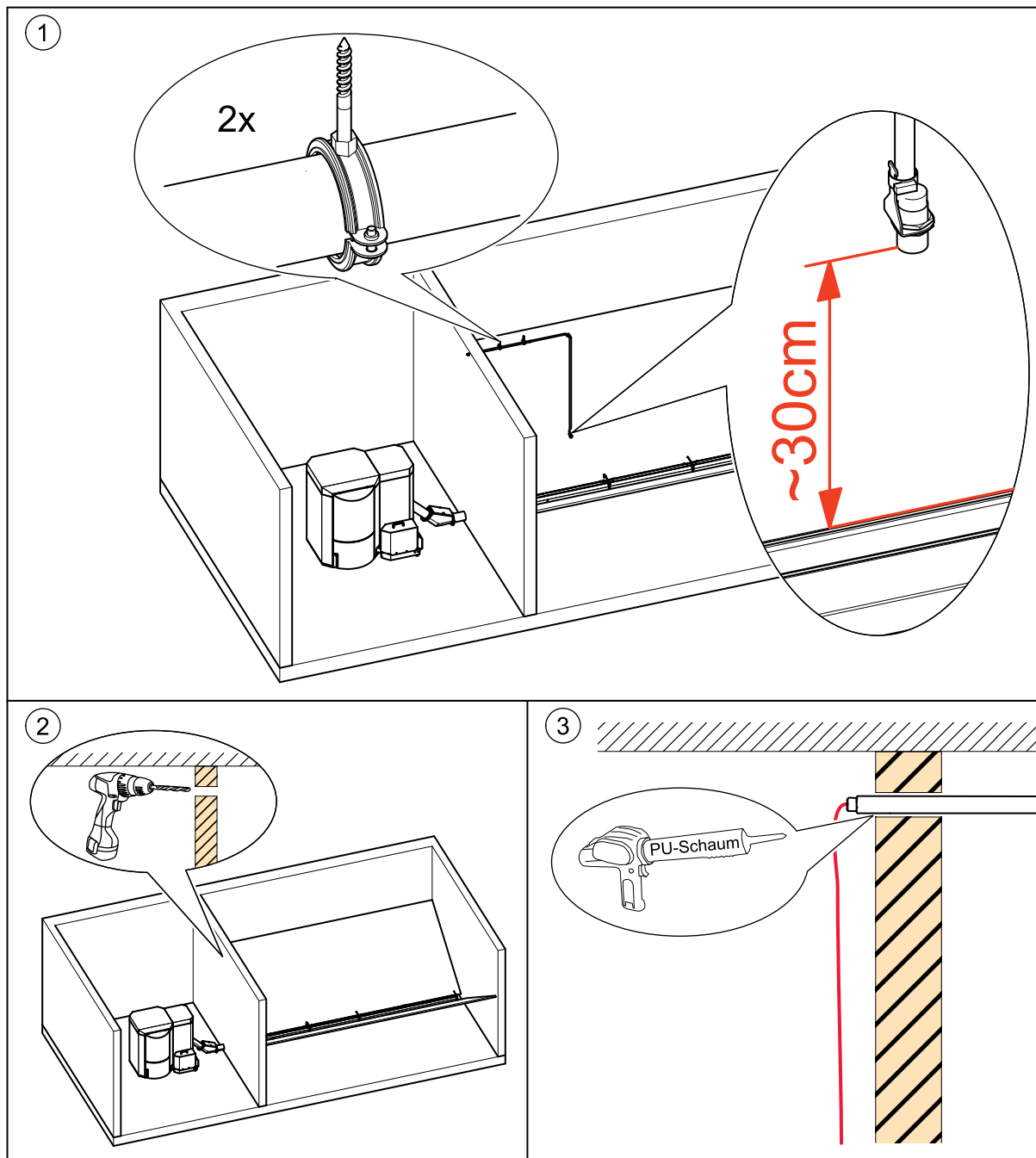
Retrofitting of the level monitoring system is only possible when the storage room has been completely emptied.



DANGER

Risk of suffocation

Ensure you ventilate the pellet storage room adequately. Switch off the heating system before entering.



NOTICE

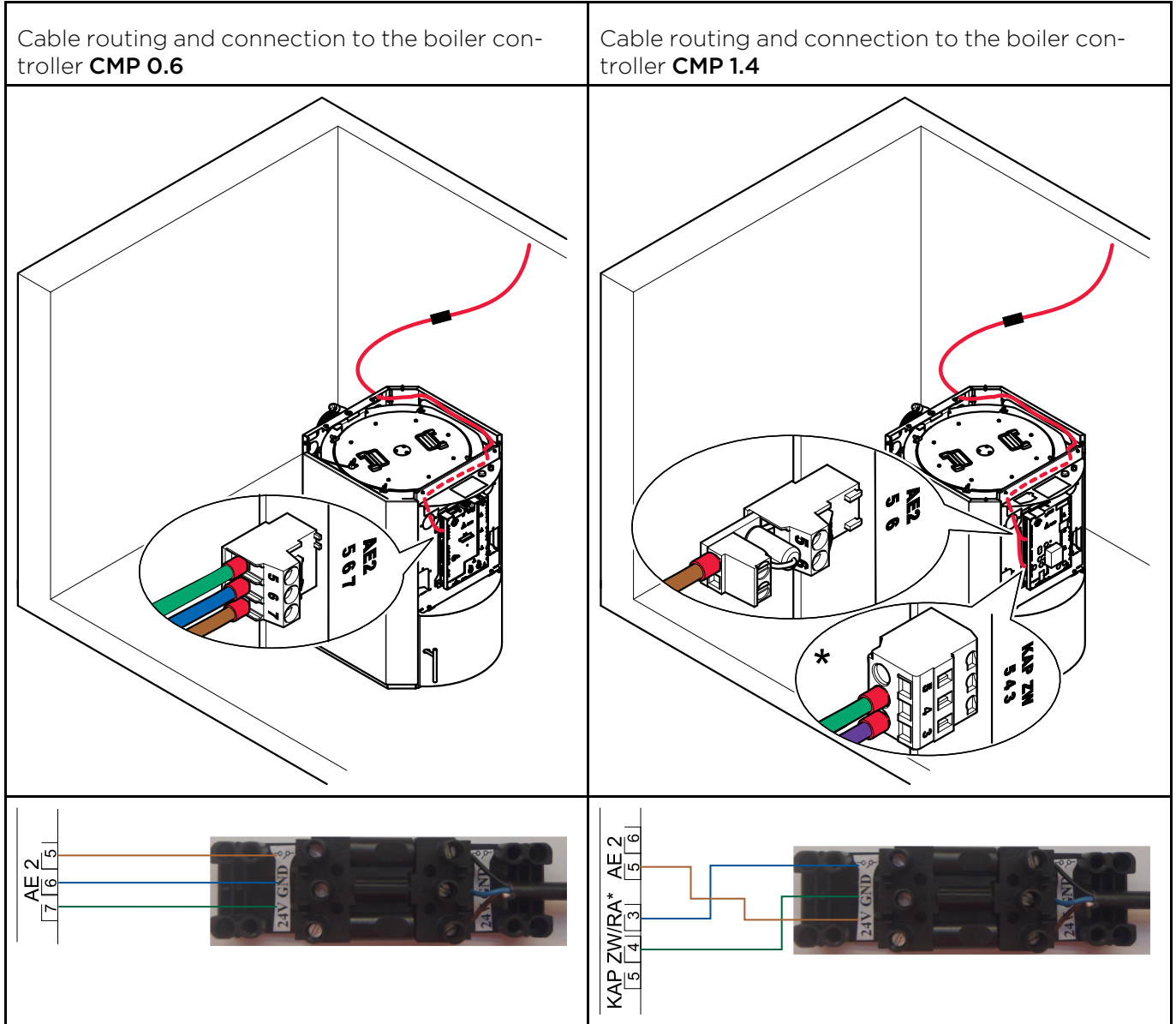
Fix the plastic hose on the telescopic tube with the hose clamp.

5 Setting Up the Level Monitoring System

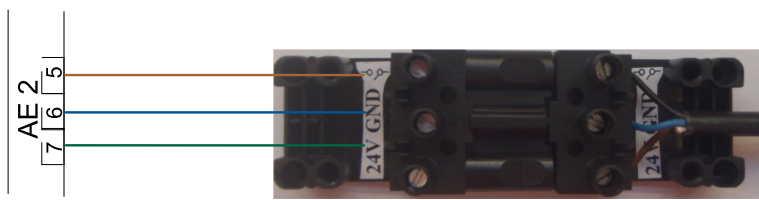
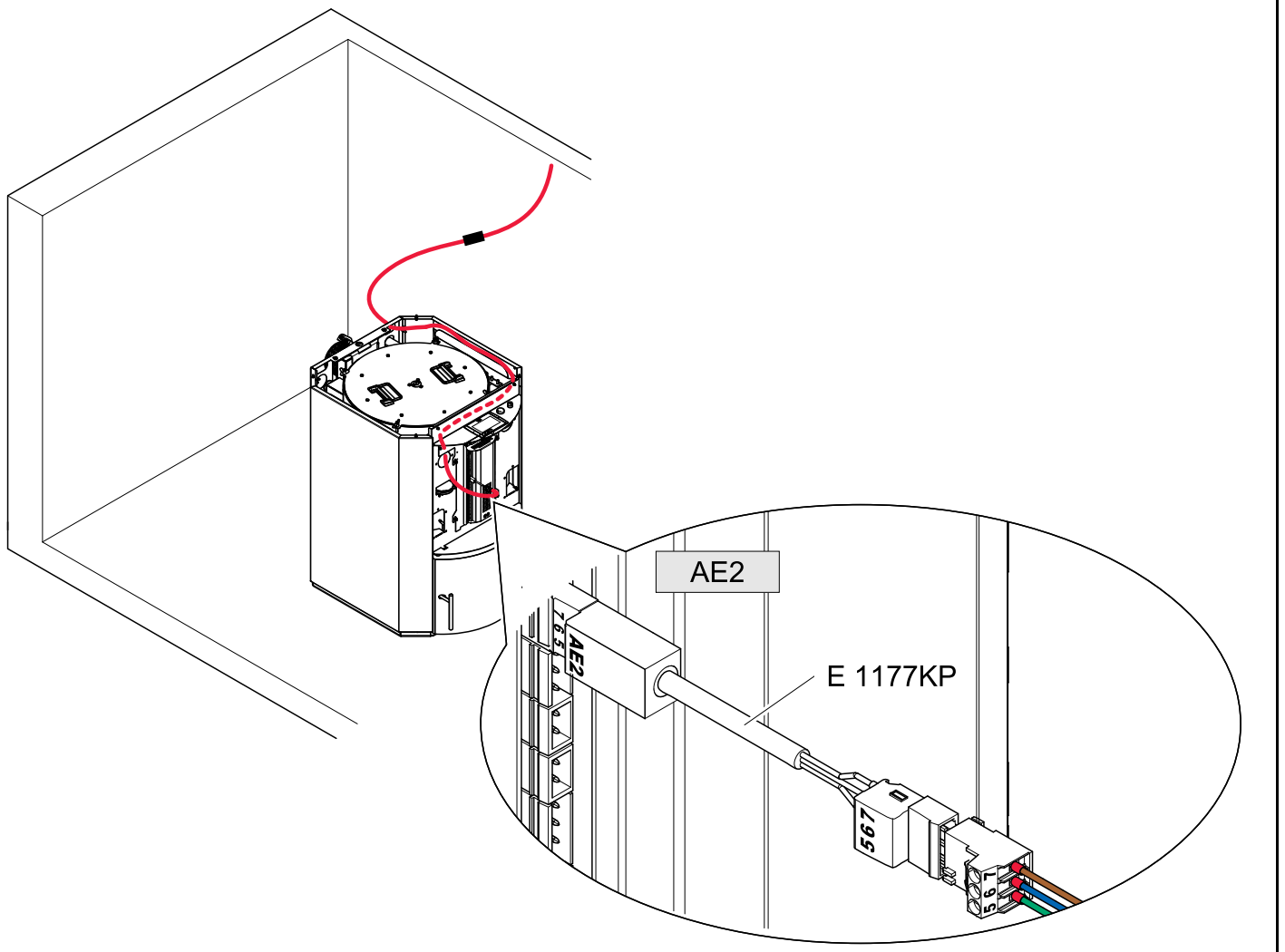
5.1 Electrical Connection of the Capacitive Sensor

Note:

The colors of the cables shown here are only symbolic and will vary depending on the manufacturer.



* You can connect the capacitive sensor with KAP ZW or KAP RA. (If occupied add the cables to one of them)

Cable routing and connection to the boiler controller **FA**

5.2 Settings on the boiler controller

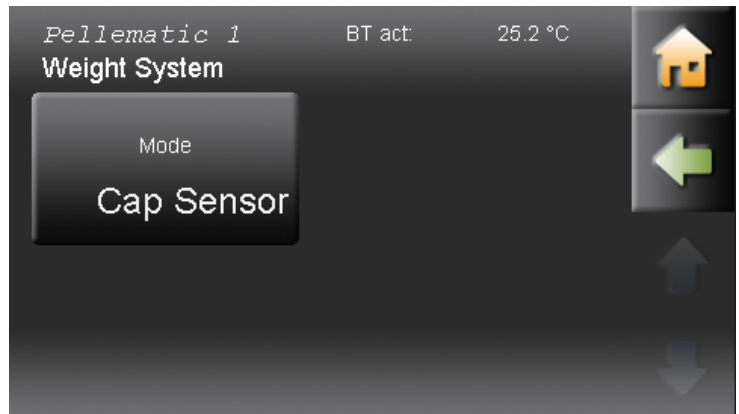
Pelletronic Plus

Parameter	Display/Default Value	Description
P 233	0	Activation of the level detection system 3 = level detection using a capacitive sensor
P 136	Pellet level	Display of the pellet level 1 = full 0 = empty - warning message displayed on the operating device.

Pelletronic Touch



Level detection system is in the menu Pellematic.



Adjust the suction system according to the demands of your heating system.

Mode

Choose: **Capacitive Sensor**...Level detection system using a capacitive sensor for storage rooms and Textile tanks.

|



Author

ÖkoFEN Forschungs- &
EntwicklungsgesmbH
A-4133 Niederkappel, Gewerbepark 1
Tel.: +43 (0) 72 86 / 74 50
Fax.: +43 (0) 72 86 / 74 50 - 10
E-Mail: oekofen@pelletsheizung.at
www.oekofen.com

© by ÖkoFEN Forschungs- und EntwicklungsgesmbH
Subject to modifications